



CALIBRATION BATHS

(+ 40 °C ...+ 250 °C)

Model:

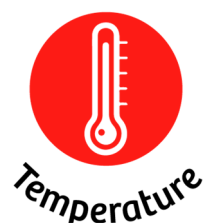
OB-7/2

OB-22/2

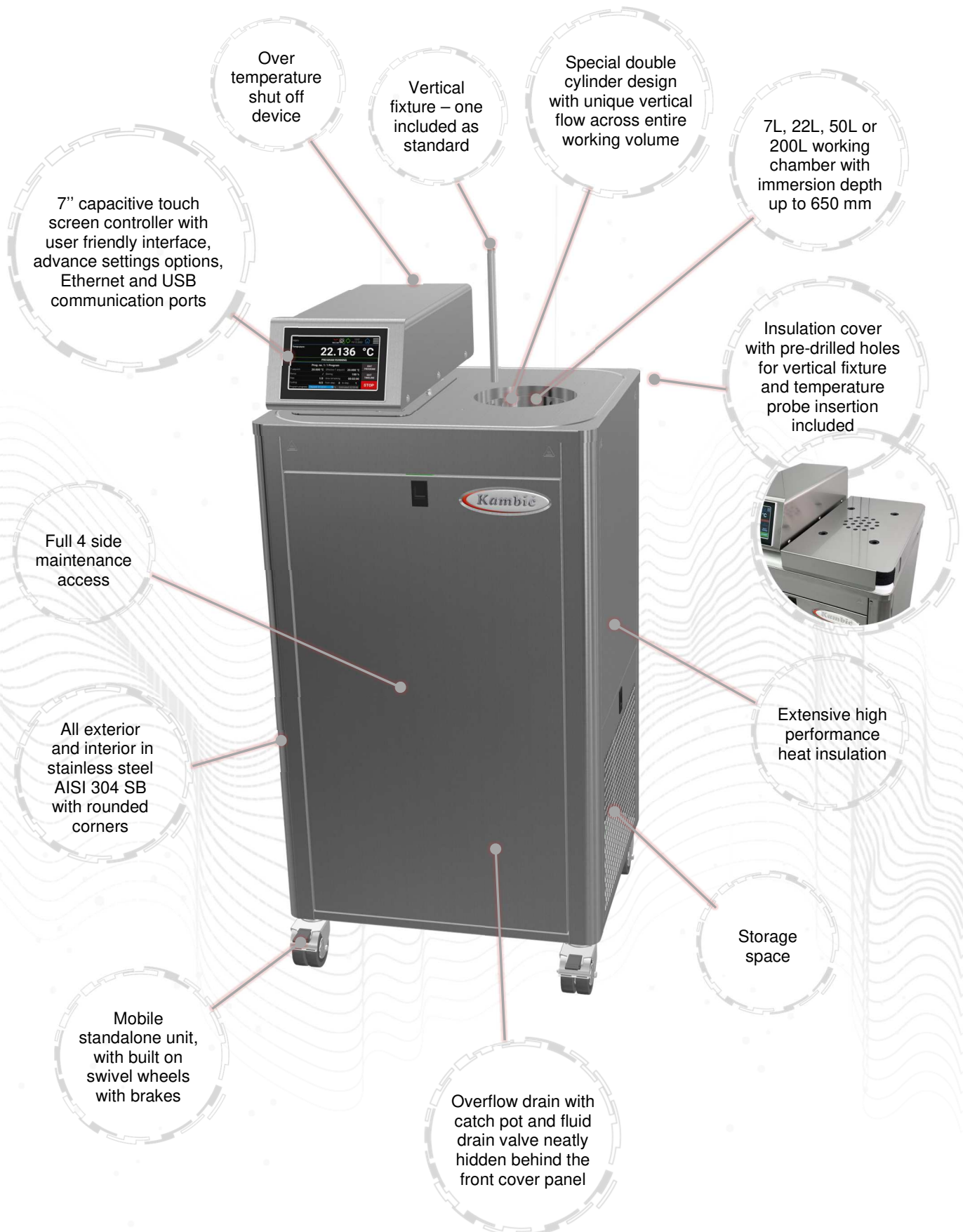
OB-50/2

OB-200/2

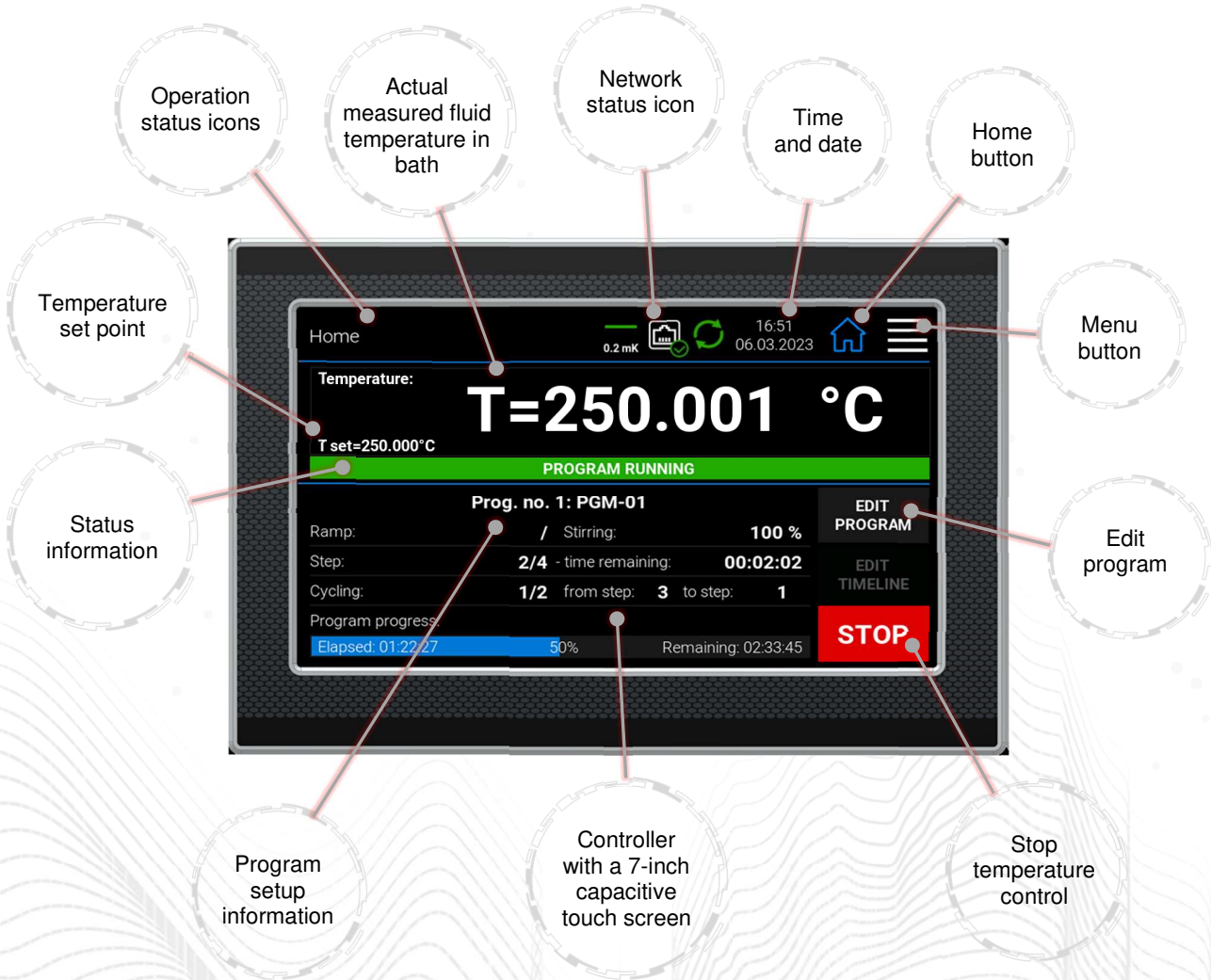
- High temperature range - metrology performance
 - Uniformity and stability in mK range
 - Calibrate sensors of any dimension
 - Fluid ensures perfect heat transfer
 - Up to 650 mm immersion depth
 - Unique vertical flow design
 - State of the art solution
- Four bath sizes



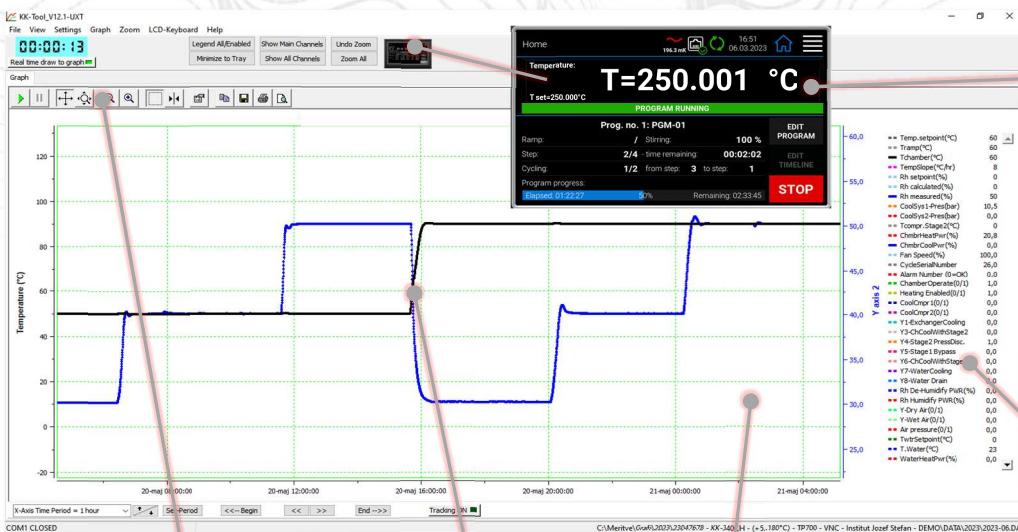
Device description:





Touch display with advanced controller functions:



OB-Tool software for PC (free – included with every unit):



Technical data:


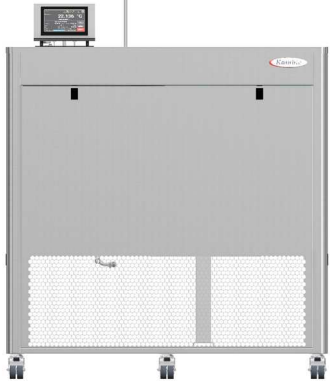
| | OB-7/2 | OB-22/2 |
|---|---|---|
| |  |  |
| External dimensions (WxHxD) [mm] | 484 x 1134 x 474 | 604 x 1231 x 554 |
| Internal dimensions (diameter x immersion depth) [mm] | Ø 100 x 270 | Ø 147 x 500 |
| Volume [L] | ~ 7 | ~ 22 |
| Fluid quantity for operation [L] | 10 | 25 |
| Temperature range [°C] | + 40 ...+ 250 | + 40 ...+ 250 |
| Temperature display resolution [°C] | 0.001 | 0.001 |
| Temperature set resolution [°C] | 0.001 | 0.001 |
| Temperature stability [°C] | ± 0.001 @ 50 °C ± 0.002 @ 100 °C ± 0.006 @ 250 °C | ± 0.001 @ 50 °C ± 0.002 @ 100 °C ± 0.006 @ 250 °C |
| Temperature uniformity [°C] | < ± 0.007 @ 100 °C | < ± 0.007 @ 100 °C |
| Heating rate | ~ 1 hour (+ 20 °C ...+ 100 °C) | ~ 1 hour (+ 20 °C ...+ 100 °C) |
| Cooling rate | N/A | N/A |
| Temperature Control | PID | PID |
| Noise level [dBA] | < 58 | < 58 |
| Cooling (Built in cooling coil for external cooling) | N/A Natural | N/A Natural |
| Power supply | 230 V 50/60 HZ (± 10 %) | 230 V 50/60 HZ (± 10 %) |
| Wattage [W] | 1200 | 2100 |
| Interface | Ethernet, USB | Ethernet, USB |
| Weight [kg] | ~ 54 | ~ 75 |

*All performance data with fluid KDC 200.50

*All performance in controlled environment ($T_{ambient} = 22 \text{ °C} \pm 3 \text{ °C}$)!

*Accessories might affect performance!

*Optional extended temperature range: + 40 °C ...+ 300 °C

| | OB-50/2 | OB-200/2 |
|---|---|---|
| |  |  |
| External dimensions (WxHxD) [mm] | 749 x 1255 x 499 | 1264 x 1476 x 994 |
| Internal dimensions (diameter x immersion depth) [mm] | Ø 320 x 500 | Ø 600 x 650 |
| Volume [L] | ~ 50 | ~ 200 |
| Fluid quantity for operation [L] | 65 | 260 |
| Temperature range [°C] | + 40 ...+ 250 | + 40 ...+ 250 |
| Temperature display resolution [°C] | 0.001 | 0.001 |
| Temperature set resolution [°C] | 0.001 | 0.001 |
| Temperature stability [°C] | ± 0.001 @ 50 °C ± 0.002 @ 100 °C ± 0.006 @ 250 °C | ± 0.002 @ 50 °C ± 0.003 @ 100 °C ± 0.008 @ 250 °C |
| Temperature uniformity [°C] | < ± 0.007 @ 100 °C | < ± 0.007 @ 100 °C |
| Heating rate | ~ 1,5 hours (+ 20 °C ...+ 100 °C) | ~ 2,5 hours (+ 20 °C ...+ 100 °C) |
| Cooling rate | N/A | N/A |
| Temperature Control | PID | PID |
| Noise level [dBA] | < 58 | < 68 dBA |
| Cooling (Built in cooling coil for external cooling) | N/A Natural | N/A Natural |
| Power supply | 230 V 50/60 HZ (± 10 %) | 3x400 V 50/60 HZ (± 10 %) |
| Wattage [W] | 3200 | 7000 |
| Interface | Ethernet, USB | Ethernet, USB |
| Weight [kg] | ~ 130 | ~ 370 |

*All performance data with fluid KDC 200.50

*All performance in controlled environment ($T_{ambient} = 22 \text{ °C} \pm 3 \text{ °C}$)!

*Accessories might affect performance!

*Optional extended temperature range: + 40 °C ...+ 300 °C

Accessories:

- LIG thermometer holder



- Vertical fixture



- Adjustable multiple probe fixture



- External fluid level for LIG



- Additional lid



- Removable shelf



- Fume hood



- Evaluation report



Ordering information and accessories:

| Description | Part no. |
|---|----------|
| Calibration bath OB-7/2 | 1603 |
| Calibration bath OB-22/2 | 1607 |
| Calibration bath OB-50/2 | 1608 |
| Calibration bath OB-200/2 | 2972 |
| Evaluation report – performed by Kambič | 1719 |
| Evaluation report (accredited ISO/IEC 17025:2017) | 2997 |
| External fluid level for LIG | 1655 |
| Vertical fixture | 1657 |
| Adjustable multiple probe fixture | 1733 |
| LIG (liquid in glass thermometer) fixture | 1735 |
| Local fume hood with fan | 1656 |
| Removable shelf | 1658 |
| Extra lid for OB-7/2 | 1737 |
| Extra lid for OB-22/2 | 1636 |
| Extra lid for OB-50/2 | 2115 |
| Extra lid for OB-200/2 | 812 |
| Silicone oil fluid KDC 200.20 (+ 10 °C ...+ 230 °C) | 600 |
| Silicone oil fluid KDC 200.50 (+ 30 °C ...+ 278 °C) | 631 |
| Silicone oil fluid KDC 710 (+ 80 °C ...+ 300 °C) | 2782 |

**Accessories might affect performance!*

